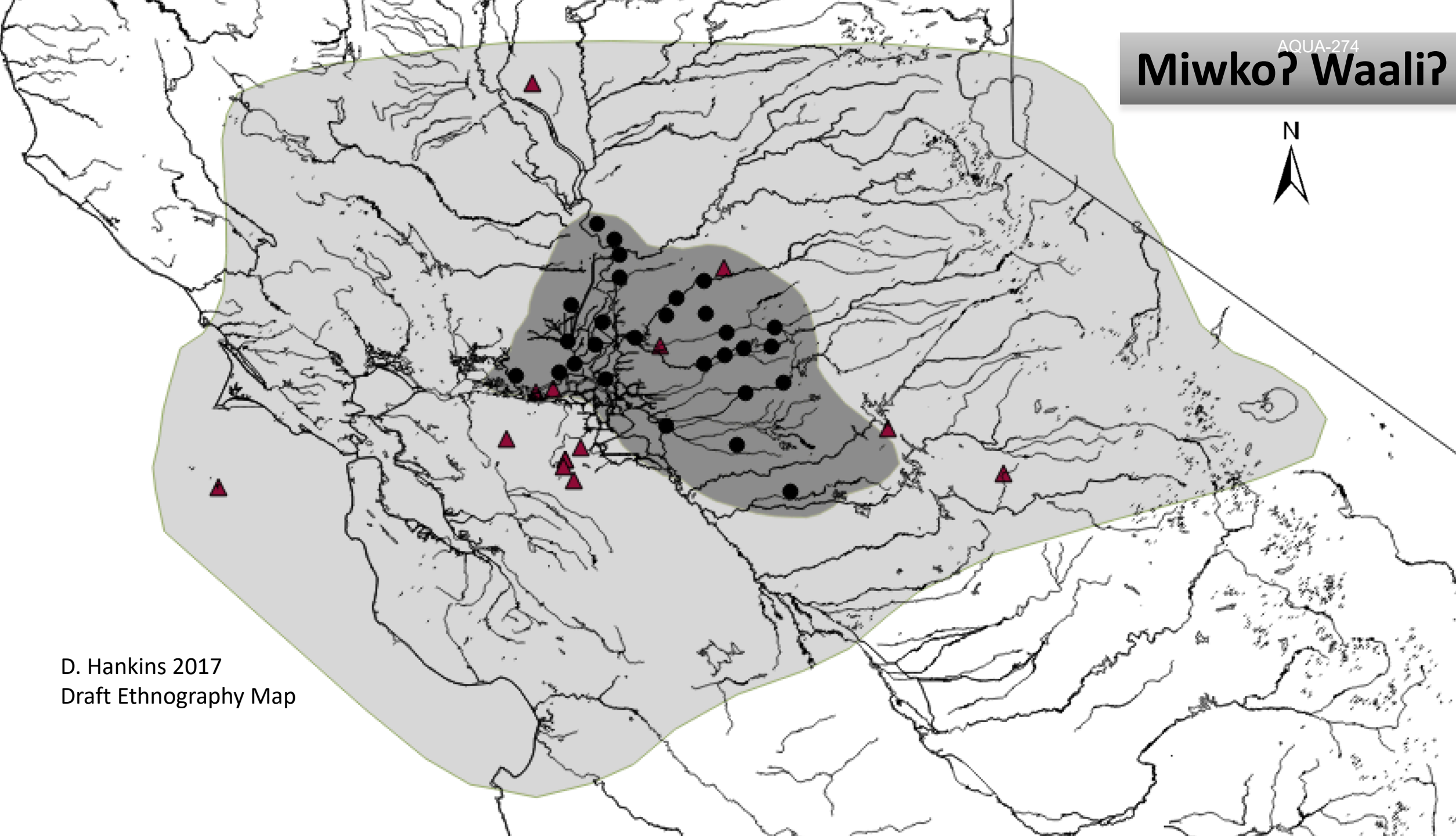


Don L. Hankins

Miwko?

California Indian Water Commission

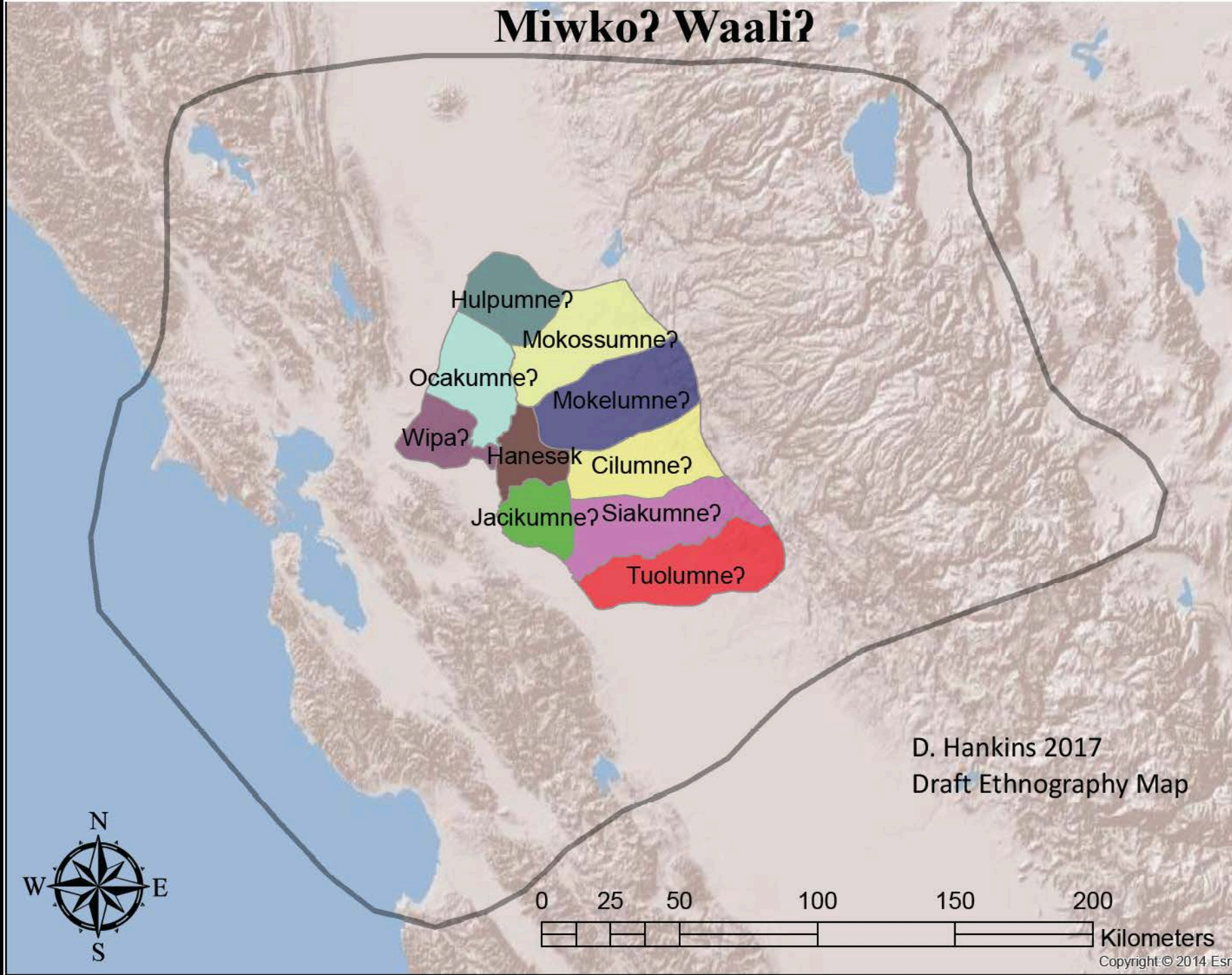
Miwko? Waali?



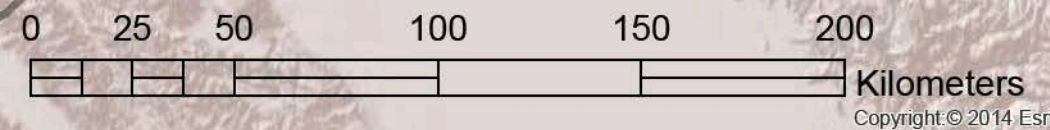
D. Hankins 2017
Draft Ethnography Map

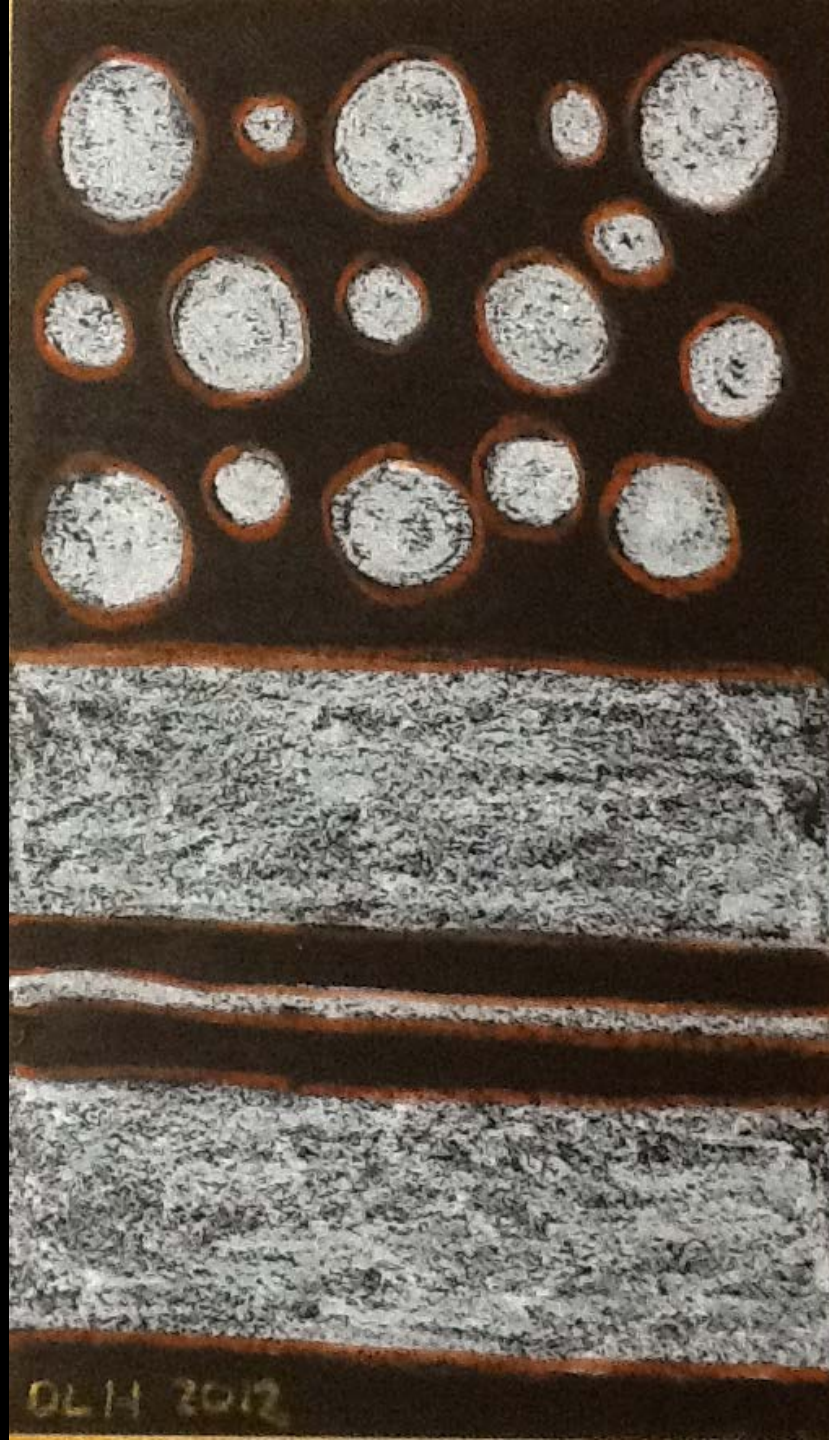
Miwko? Waali?

AQUA-274



D. Hankins 2017
Draft Ethnography Map





DLH 2012

Land is the Source of Law



The Indigenous Delta



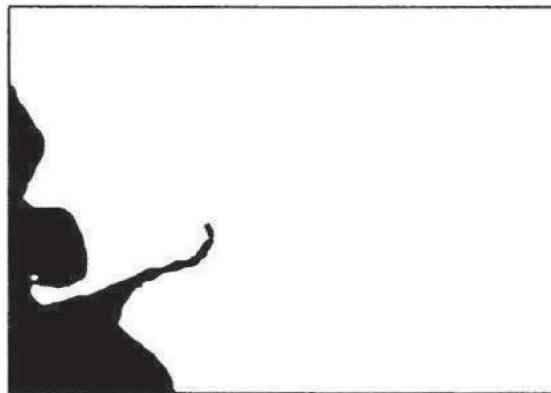
Our Relations - Kinship





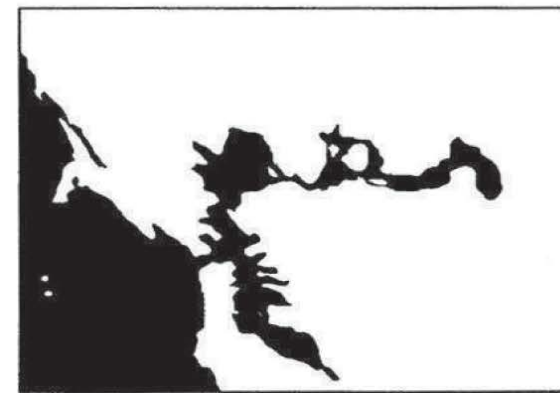
15,000 Years Ago

(End of last Ice Age -- sea level approximately 400 feet below present level; rivers not shown)



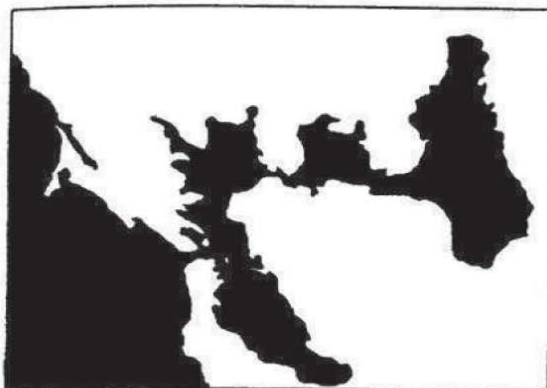
10,000 Years Ago

(Formation of Farallon Islands and intrusion into the "Golden Gate")



5,000 Years Ago

(Formation of Bay and Delta Basins)



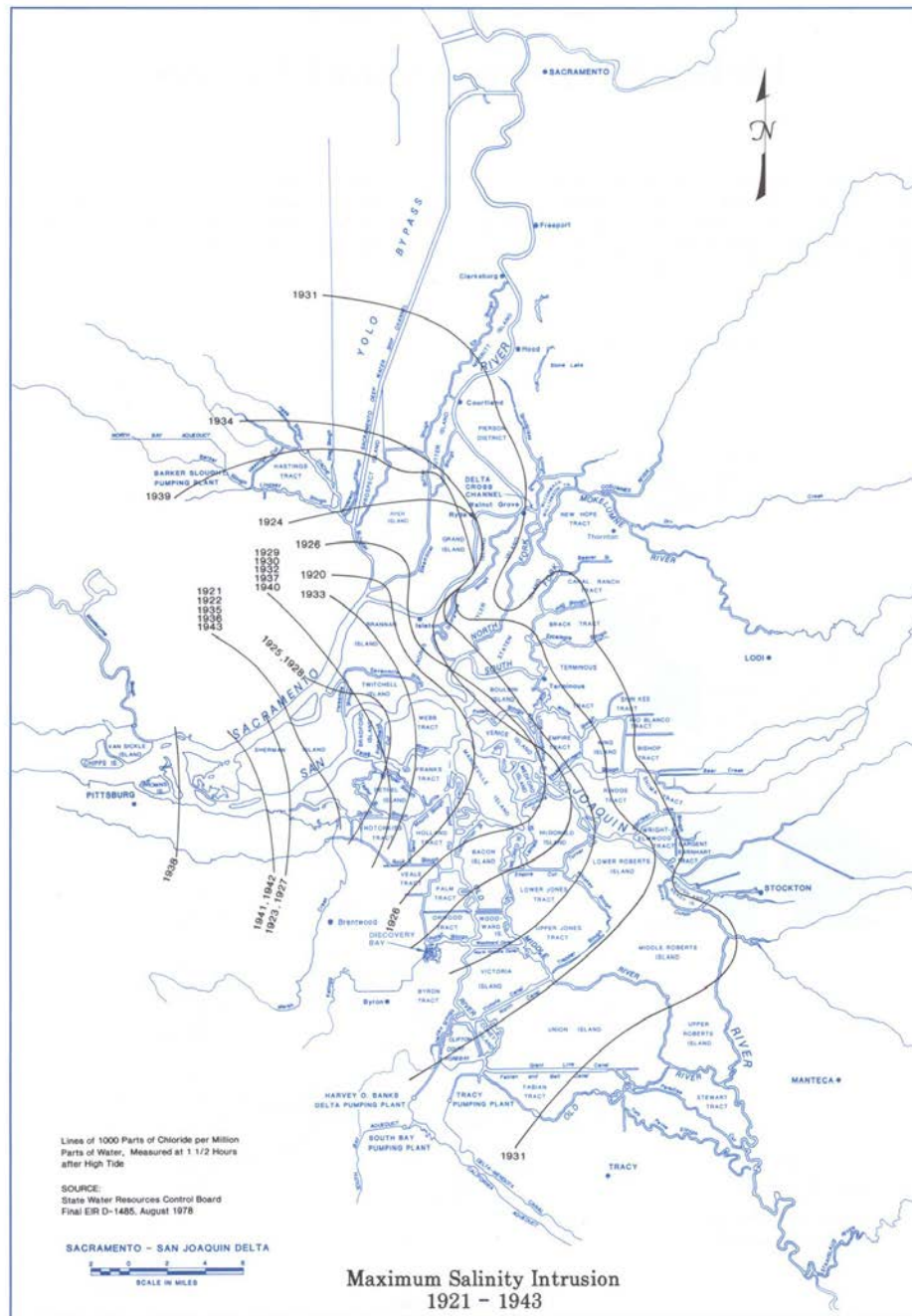
125 Years Ago

(Landward edge of undiked tidal marsh)



Today

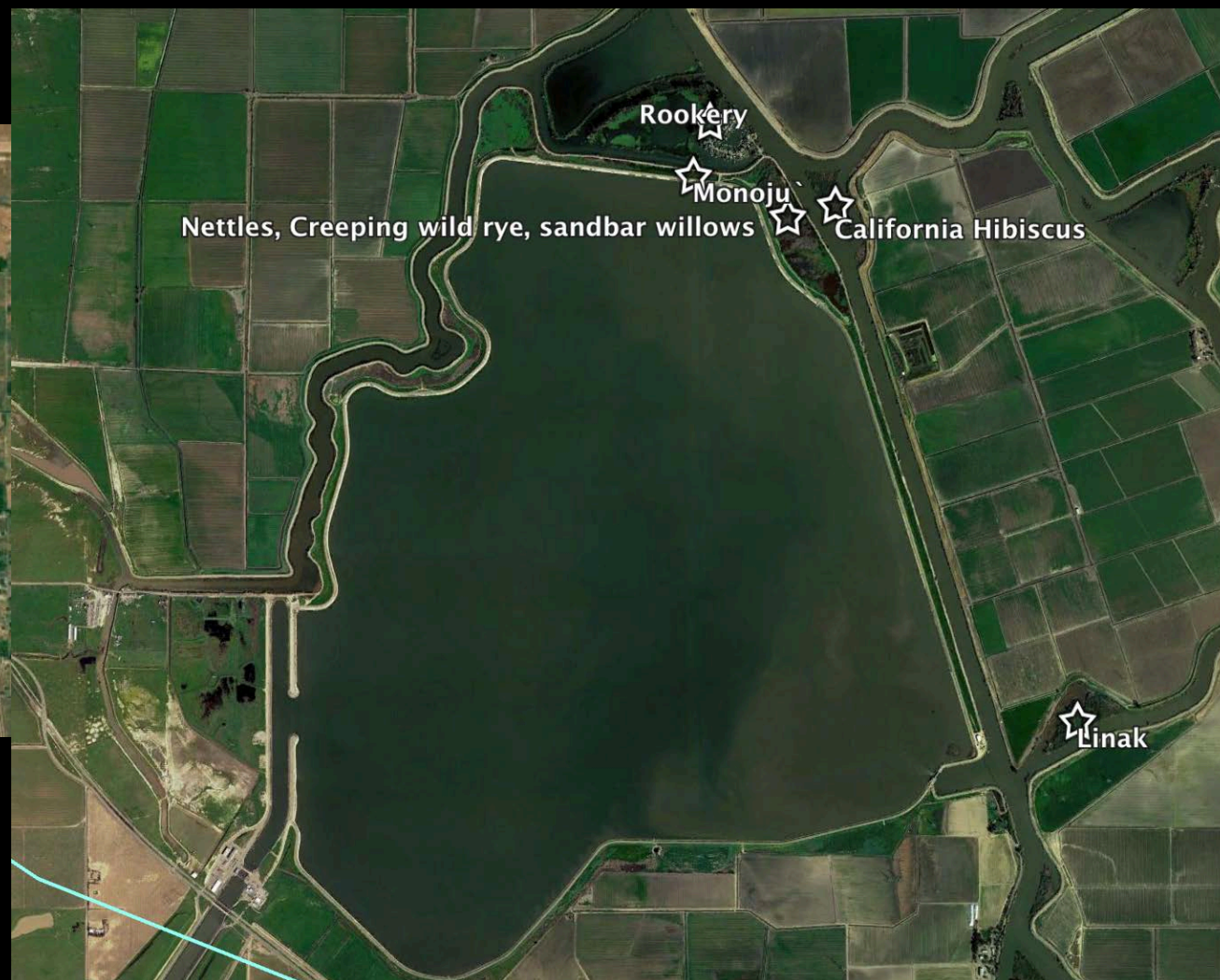
(Includes changes due to hydraulic mining sediment deposition, land reclamation, and filling of wetland areas)



Traditional Cultural Practices



Water Fix Impacts to Traditional Cultural Properties and Landscapes



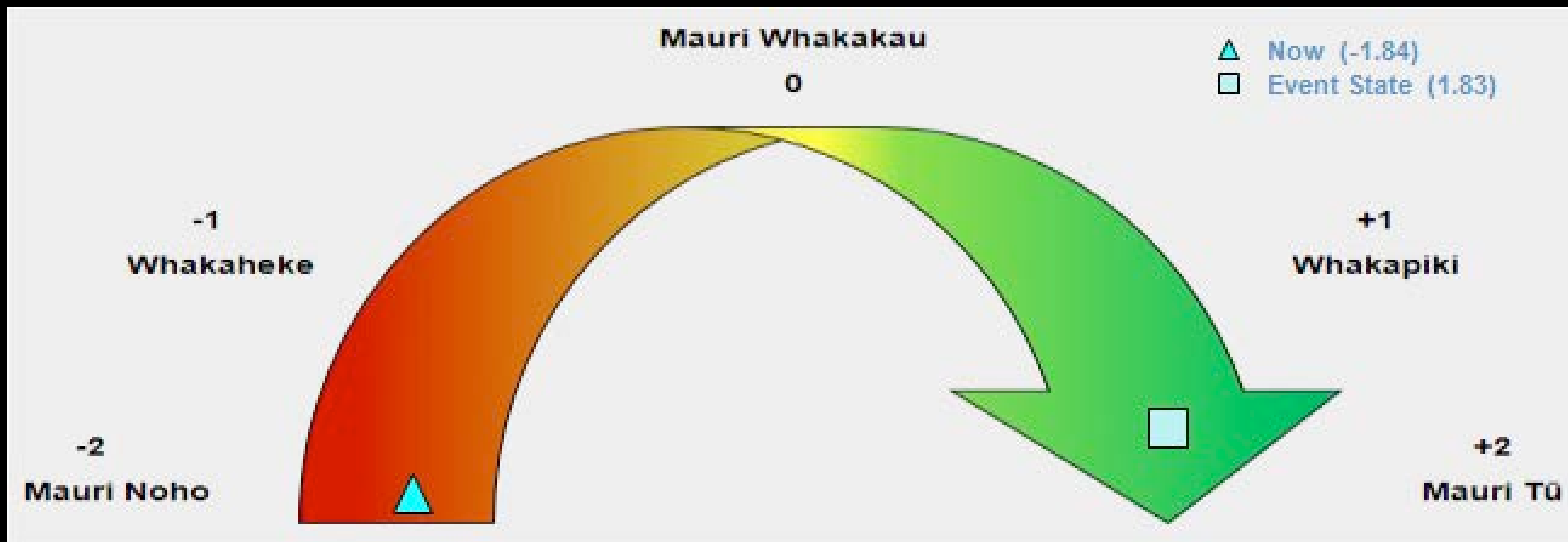
Trust Responsibilities and Water Rights

- 18 Unratified Treaties
- Pre-emptive Rights
- Winters Doctrine
- Aqua Caliente v. Coachella Valley Water District & Desert Water Agency
- Self Determination and Governance
 - PL 93 638
- Fish & Game Code 16000



Common Name	Scientific Name	Status <small>AQUA-274</small> (federal/state/CNPS)
Fish		
Delta smelt*	<i>Hypomesus transpacificus</i>	T/E/-
Spring-run Chinook salmon*	<i>Onchorhynchus tshawytscha</i>	T/T/-
Steelhead*	<i>Onchorhynchus mykiss</i>	T/-/-
Sacramento splittail*	<i>Pogonichthys macrolepidotus</i>	-/ssc/-
Green sturgeon*	<i>Acipenser medirostris</i>	T/ssc/-
Pacific lamprey*	<i>Entosphenus tridentatus</i>	-/-/-
Mammals		
Riparian brush rabbit*	<i>Sylvalagus bachmani riparius</i>	E/E/-
Birds		
California clapper rail*	<i>Rallus longirostris obsoletus</i>	E/E, FP/-
Greater sandhill crane*	<i>Grus Canadensis tabida</i>	-/T, FP/-
Tricolored blackbird*	<i>Agelatus tricolor</i>	-/ssc/-
Reptiles		
Western pond turtle*	<i>Actinemys marmorata</i>	-/ssc/-
Amphibians		
California red-legged frog*	<i>Rana draytonii</i>	T/ssc/-
California tiger salamander*	<i>Ambystoma californiense</i>	T/T/-
Invertebrates		
Vernal pool fairy shrimp*	<i>Branchinecta lynchi</i>	T/-/-
Vernal pool tadpole shrimp*	<i>Lepidurus packardi</i>	E/-/-

Environmental Impact Analysis - Mauriometer



- Ecosystem
- Cultural

- Community
- Economic

“...for many parts of the world, in aiming to restore to a “pristine” or “natural” state, managers both ignore prior human impact and deny indigenous human societies their rightful place as effective ecosystem managers.”

Hobbs et al. 2011.

